

# A SUMMARY AND FORECAST OF DEMAND FOR MUNICIPAL STREET TREE SERVICE ON STATEN ISLAND, NEW YORK

by James J. McCabe

**Abstract.** The objective of this study was to establish a reasonably accurate demand forecasting model for municipal street tree services on Staten Island, New York. Using the raw data gathered from years from 1996 through 2000, a chart and mathematical equation for anticipated monthly demand were derived for the year 2001. The development of the model was accomplished with simple arithmetic computations and computer-assisted regression analysis. Although occasional storm damage skewed some monthly figures, it is apparent that demand for public tree maintenance on Staten Island is decidedly seasonal and predictable.

**Key Words.** Municipal arboriculture; demand forecasting; operations research; municipal tree maintenance.

---

Nestled just south of Manhattan and to the east of New Jersey is the City of New York's borough of Staten Island, U.S. With a land mass of approximately 153 km<sup>2</sup> (59 mi<sup>2</sup>) and a human population of 440,000, the demands for service from municipal government can be imposing. According to some estimates, there are 80,000 existing street trees for which the borough forestry office of the Department of Parks & Recreation has maintenance jurisdiction. Whether it is a request for tree pruning, removal, or emergency storm damage assistance, the forestry office receives phone calls from residents year round.

The relative importance of municipal arboriculture service is not universal. Differences remain between communities and their budgeted forestry dollars. Professional forestry managers could be envious of a program such as Milwaukee's in which their staffing and equipment needs are met to allow for a comprehensive routine maintenance

program (Zillmer et al. 2000), but that program is a luxury not every community has. Staten Island forestry operates on a comparatively reduced budget. The borough tree work is accomplished with a total staffing level of 13 city employees, including office personnel, supervisors, and field personnel using two bucket trucks, two chippers, a hydraulic loader, and a stump grinder. When additional budgeted dollars become available, expense contracts are granted to allow private tree firms a chance to help the borough catch up with needs.

The borough administration considers it the job of the borough's forestry office to satisfy the public's desire for routine tree maintenance while at the same time helping to eliminate potential tree-related hazards. With the ability to forecast an anticipated workload, the forestry office believes it can better match service with demand. The objective of this paper is to document an anticipated demand chart that helps to quantify the amount of work that climbers and pruners would be asked to perform during the year 2001. The raw data presented were obtained from the office of the New York City Department of Parks & Recreation, Division of Forestry, Staten Island, New York.

## METHODS

Record keeping is essential in any municipal operation. The importance of accurate information is evident during questions of accountability, recurring budget negotiations, and resource allocations. It is the operational decision of borough administration to inspect city park and street trees at the request of residents. The forestry office answers the request by recording the information and having the tree inspected. The inspector makes a site visit

to determine whether the city forestry crews need to address a problem. If warranted, a new work order is generated and a crew is sent to the location for work needed.

Monthly management reports from the borough forestry office were used to collect the informational data of all resident requests that generated new work orders. Requests of a general nature and repeat inspections were not analyzed in this study because of the low percentage of work actually generated from this information. All work orders are recorded in categorical fashion, with designations ranging from tree removals to limbs down. For the purposes of this paper, all new work orders were combined into the single category to allow for a more executive awareness of the operation.

Data on new work orders generated were collected for the years 1996 through 2000. Tree removal, pruning, and root slicing for sidewalk repairs are routine requests that are often addressed by the inspectors and crew. Emergency situations such as trees down, limbs down, and hanging limbs during periodic storm conditions are also accounted for on the reports. Each of the differing work requests were tallied on a monthly basis, combined into a single category, and then averaged over the 5 years. The resulting information is documented in Table 1.

Although averaging the data over a period of years may prove to be an acceptable method for reasonably predicting future demand, this paper

takes the information a step further and identifies the monthly standard deviation statistic as well as the overall yearly trend. The standard deviation statistic is a measure of dispersion around the mean, and the regression analysis is used as a way to determine the data trend. Computer processing was accomplished with the personal computer statistical software package SPSS for Windows Student Version Release 6.0.1 (Norusis 1993).

## RESULTS AND DISCUSSION

It can be difficult to accurately predict demand. Figure 1 shows the average monthly work orders and dispersion around the mean. Each month shows differing amounts of variability. It is not surprising to find that the greatest amount of scatter exists during the months of seasonal change and resulting storm activity. It is during this time that resources are put to the greatest test. One such notable period was during the month of September 1998, when a Labor Day storm wrecked havoc on the urban forest and stretched borough resources to extreme levels. While these storms are unpredictable, they do not occur often. Averaging monthly data over several years can help smooth out any unexpected spike in work requests.

The software package was successful in calculating the best fit curve on our monthly data. A third-degree degree polynomial was shown to be the most satisfactory equation available to represent this curve:

**Table 1. Number of work orders generated for a 5-year period (1996–2000).**

Year	Jan.	Feb.	Mar.	Apr.	May	Jun.	Jul.	Aug.	Sept.	Oct.	Nov.	Dec.
1996	42	125	468	254	181	279	459	209	336	217	347	105
1997	104	146	278	289	306	399	474	331	279	293	143	112
1998	131	95	210	226	316	482	513	305	1317	334	215	107
1999	88	106	268	243	231	341	367	362	447	223	174	80
2000	62	62	129	116	237	280	233	228	205	168	130	121
Average	85.4	106.8	270.6	225.6	254.2	356.2	409.2	287.0	516.8	247.0	201.8	105.0
Standard deviation	34.9	31.7	125.3	65.5	56.3	86.1	112.1	66.0	456.0	66.0	87.5	15.3

$y = 53.7051 + 25.6376x + 9.6384x^2 - 0.9605x^3$  where  $y$  = the predicted value, and  $x$  = the month of the year (January = 1, February = 2, ... December = 12)

This information is graphically illustrated in Figure 2.

According to Berenson and Levine (1989), a statistical model is only an approximation of the exact relationship between two variables. The regression line serves as an approximate predictor of a  $y$  value for a given value of  $x$ .

Norusis (1993) points out that the commonly used measure to assess goodness of fit of a linear model is  $R^2$ . Furthermore, the adjusted  $R^2$  statistic attempts to correct  $R^2$  in ways to more closely reflect the goodness of fit of the model in the population. Our computer output calculated an adjusted  $R^2$  value of 0.629. By using the regression model, the variability in predicting work orders has been reduced by 63%. The remaining 37% of the variability can be explained only by factors other than the month of the year. Other factors that may have an influence in the number of work order requests received include changing weather conditions or even the changing desires and needs of an increasingly diverse human population. Because this fitted line of regression is a line that fits the data with a minimum amount of variation, we consider the regression model (Figure 2) an acceptable representation of the anticipated public

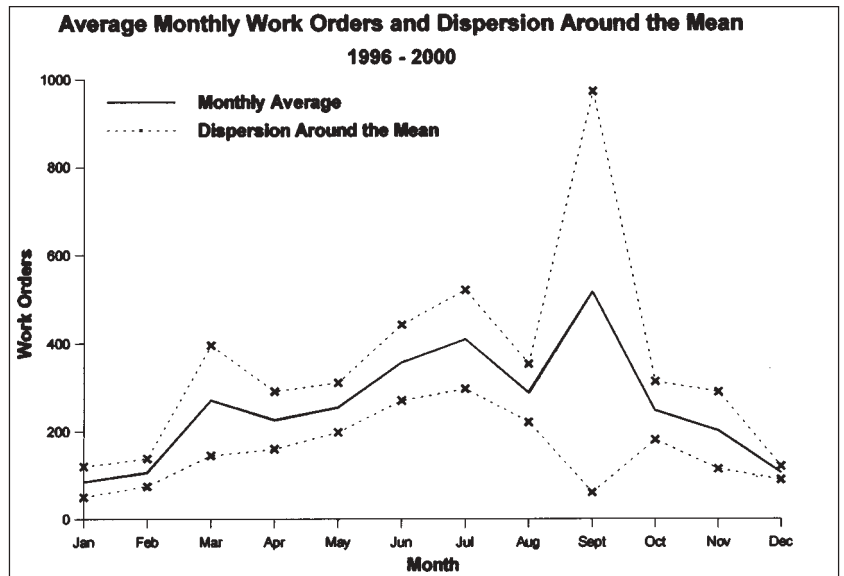


Figure 1. Average demand for service.

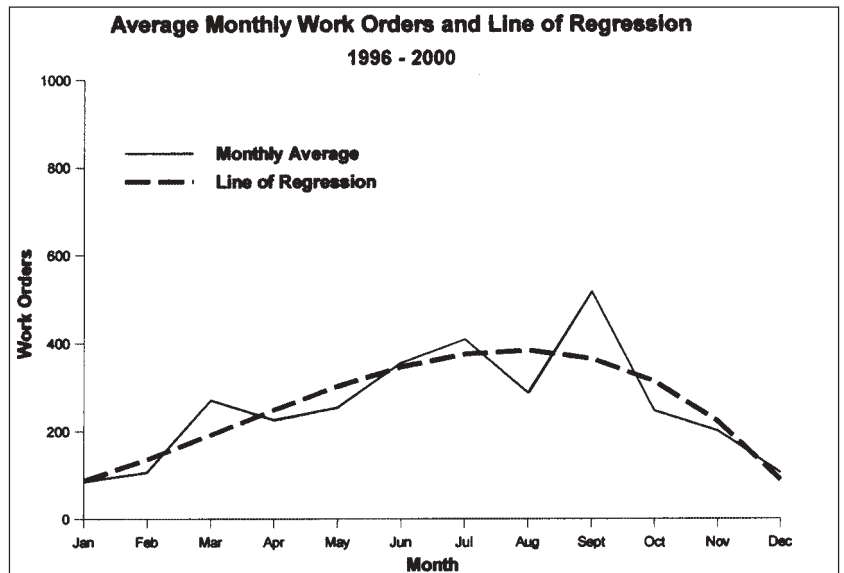


Figure 2. Forecasted demand for services.  $y = 53.7051 + 25.6376x + 9.6384x^2 + 0.9605x^3$ .

demand for tree service on Staten Island during the forecast year 2001.

Examining the graphed data in Figures 1 and 2 shows that the demand for municipal tree work service is decidedly seasonal. The late spring and summer months prove to be the time of year

with the greatest amount of service requests and newly generated work orders, while demand for service tapers off in the autumn to a wintertime lull before picking up again. Understanding the seasonal nature of the business is but one aspect of managerial preparedness. Identifying specific quantities for future demand can be a realistic first step in meaningful operations research.

### **SIGNIFICANCE TO THE ARBORICULTURE INDUSTRY**

When faced with restrictive budgetary constraints, it is incumbent upon all administrators to seek out and provide better management practices. Whether or not municipal arboriculture programs should provide scheduled routine tree maintenance or an operation dedicated to service on demand is subject to the needs and wishes of the taxpaying public and elected officials. Demand forecasting can be used as a tool to better understand, evaluate, and serve the needs of the community.

### **LITERATURE CITED**

- Berenson, M.L., and D.M. Levine. 1989. *Basic Business Statistics: Concepts and Applications* (4th Ed.). Prentice Hall, Englewood Cliffs, NJ. 904 pp.
- Norusis, M.J. 1993. *SPSS for Windows: Base System Users Guide*, Release 6.0. SPSS, Inc., Chicago, IL. 828 pp.
- Zillmer, R.E., J.L. Boeder, and K.G. Genich. 2000. A productivity timing system for tree climbing training. *J. Arboric.* 26(2):97-105.

#### *Forester II*

*NYC Department of Parks & Recreation*

*1150 Clove Road*

*Staten Island, NY, U.S. 10301*

*(718) 816-9193*

*pogyman@hotmail.com*

**Résumé.** L'objectif de cette étude était d'établir un modèle de prévision raisonnablement précis de la demande en services pour les arbres municipaux de rues de Staten Island dans l'état de New York. En utilisant les données brutes recueillies de 1996 à 2000, une charte et une équation mathématique pour anticiper la demande mensuelle ont été dérivées pour l'année 2001. Le développement du modèle a été accompli avec des calculs mathématiques simples et des analyses de régression à l'aide de l'informatique. Même si des dommages par des tempêtes occasionnelles contribuent à fausser quelque peu les pronostics de certains mois, il est clair que la demande pour l'entretien des arbres publics de Staten Island est définitivement saisonnière et prévisible.

**Zusammenfassung.** Das Ziel dieser Studie war es, ein einigermaßen akkurates Vorhersagemodel für Straßenbaumdienste auf Staten Island, NY, zu etablieren. Basierend auf den gesammelten Daten von 1996-2000 wurde ein Datenblatt mit einer mathematischen Gleichung für die monatlichen Anforderungen für das Jahr 2001 entwickelt. Die Entwicklung dieses Modells wurde begleitet durch einfache arithmetische und computerunterstützte Analysen. Obwohl gelegentliche Stürme einige neue monatliche Anforderungen hervorbrachten, ist es doch offensichtlich, dass die Nachfrage nach Pflege öffentlicher Bäume auf Staten Island saisonal und vorhersehbar ist.

**Resumen.** El objetivo de este estudio fue establecer un modelo de precisión razonable para los servicios municipales de árboles urbanos en Staten Island, NY. Con el uso de los datos obtenidos en los años 1996-2000, una tabla y una ecuación matemática fueron derivadas para la demanda mensual anticipada para el año 2001. El desarrollo de este modelo fue completado con cálculos matemáticos simples y análisis de regresión por computadora. A pesar de ocasionales daños por tormentas, es aparente que la demanda para mantenimiento público de los árboles en Staten Island es decididamente estacional y previsible.